

Floor Box Product Catalog

FLOOR BOX ASSEMBLIES AND ACCESSORIES FOR
RESIDENTIAL & COMMERCIAL CONSTRUCTION



**ALLIED
MOULDED
PRODUCTS, Inc.**



Allied Moulded Floor Boxes

Growing Line of Floor Boxes

With input from end users and contractors, Allied Moulded is expanding its line to include three new floor boxes. These boxes include the single gang and round floor boxes with flip-lid style covers.

Allied Moulded's series of floor box assemblies are designed specifically for "poke through" wood floor applications and can be used in many different flooring applications including carpet, ceramic tile, laminate, or wood flooring.

These residential floor boxes, along with current models, are available in three different box types, including rectangular (single gang), square (two gang), and round profiles; and have three different finish options including brass, dark bronze, and nickel-plated brass.



*Scan QR code to browse
all floor box models and
replacement parts!*

Features & Benefits

- Designed for use in wood floor construction and can be installed with multiple floor substrate materials (ceramic, hardwood, laminate, or carpet)
- Low voltage (LV) openings, provide easy access for industry standard keystone plugins to be installed
- Optional cover material types: brass, dark bronze, or nickel-plated brass
- Cover plug screws seal water tight and allow assembly to meet UL 514C scrub-water exclusion test
- TR Tamper Resistant receptacle; 15 amp 125 volt with ground (NEMA config. 5-15R). *Note: Can easily be adapted to commercial applications with the use of industry standard receptacles*
- Extra deep wiring capacity
- UL® listed in accordance with the requirements for floor boxes in Article 314.27 of the NEC
- Provisions for cable entry through molded-in Speed Klamps™ or 1/2" knockouts
- Steel wing brackets for secure installation
- Basic rectangular or round exterior profile for quick and easy cut-in installation

New Models Added to Product Offering

The new single gang FB-6 series is similar to the FB-2 series, but has a decorative device and a flip lid cover. The FB-7 series design is similar to the FB-3 series and the FB-8 series is similar to the FB-4 series; both new series have 5.75" diameter covers with flip lids.

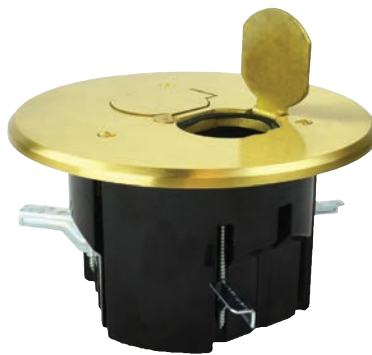
All assemblies are available in three cover finish options including brass, dark bronze, and nickel-plated brass.

FB-6 Model



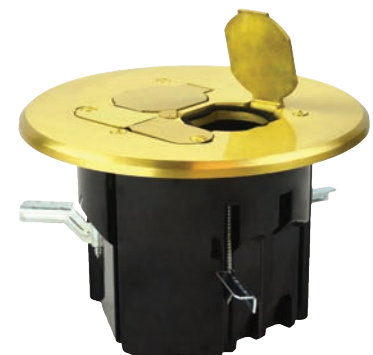
The FB-6 is similar to our FB-2 model, but has a flip-lid and a decorative device

FB-7 Model



The FB-7 is similar to our FB-3 model, but has flip-lid device covers

FB-8 Model



The FB-8 is similar to our FB-4 model, but now has flip lid device covers

Features & Benefits

Low Voltage (LV) Keystone Provisions

Are available in select models (FB-4, FB-5, & FB-8) for optional low voltage keystone plates/plug-ins to be installed

Secure Wing Brackets

For secure installation to a variety of floor materials and configurations

Extra Deep Wiring Capacity

Allows for increased wiring options

Tamper Resistant (TR) Receptacle

15 amp 125 volt with ground; *Can easily be adapted to commercial applications with the use of industry standard receptacles

Durable

Design stands up to the toughest conditions and environments

Device Cover Plugs

Are available in screw type plugs or flip lids for easy access to duplex or decorative devices

Multiple Cover Finish Options

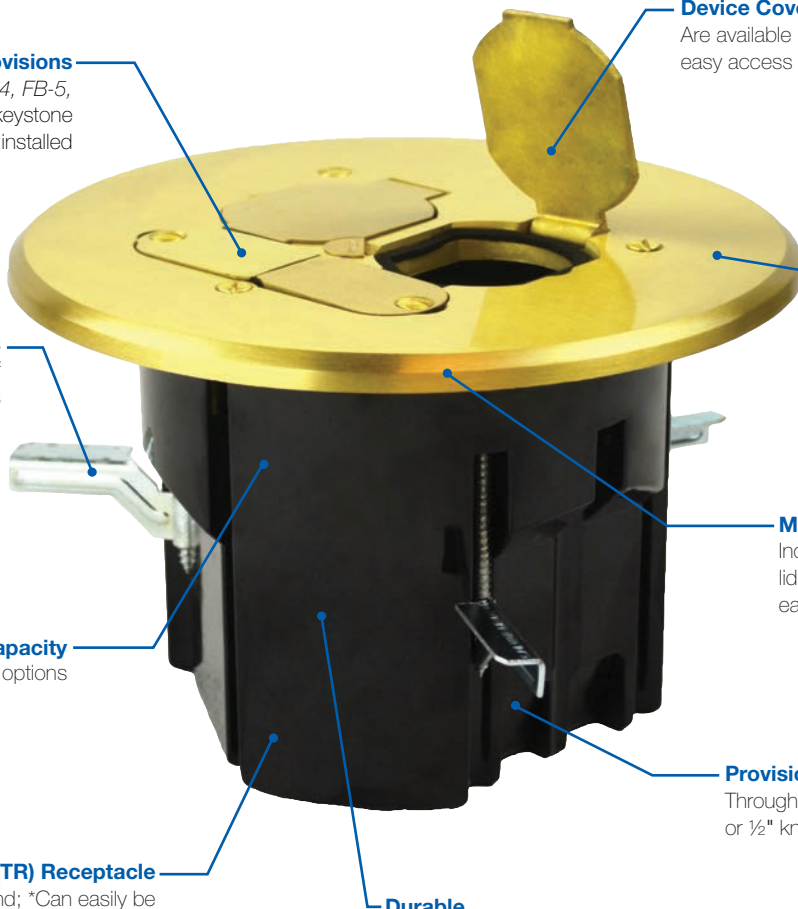
Including brass, dark bronze, and nickel-plated brass

Multiple Cover Options

Including square and round with flip lid or screw plug type openings for easy customization

Provisions for Cable Entry

Through molded-in Speed Klamps™ or 1/2" knockouts



Low Voltage Keystone Openings Available

Low voltage keystone openings are available for use with select models (FB-4, FB-5, & FB-8). Keystone plates can be installed from industry standard LV keystone plugs. Different part numbers provide various LV plug-in configurations. **NOTE: Keystone plugs are not included in retail packaging.**



Reliable Plug Seal

Ensures water tight seal and allows assembly to meet UL 514C scrub-water exclusion test. Plug seals are available in all color options including brass, dark bronze, and nickel-plated brass.



Device Options

We give you the option to choose your device. Floor box options include simplex, duplex, or decorative style devices for single, round, and two gang boxes! **NOTE: Device options vary depending on the model chosen.**

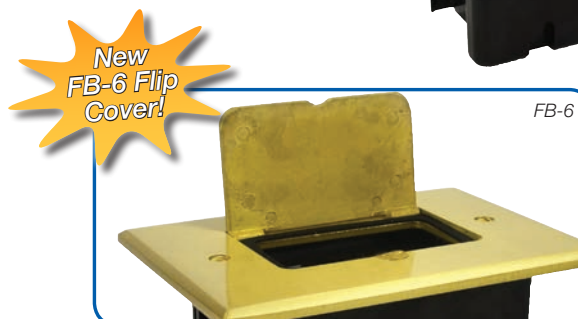


*Note: Additional floor box models may have features and benefits unlisted here.

Single Gang Floor Box Assemblies

Features & Benefits

- Optional cover material types: brushed brass, dark bronze, or nickel-plated brass
- Cover plug screws and flip lids seals are water tight and allow assembly to meet UL 514C scrub-water exclusion test
- TR Tamper Resistant receptacle; 15 amp 125 volt with ground (NEMA config. 5-15R). *Note: Can easily be adapted to commercial applications with the use of industry standard receptacles*
- Extra deep wiring capacity at 24.5 cubic inches
- UL listed in accordance with the requirements for floor boxes in Article 314.27 of the NEC
- Provisions for cable entry through molded-in Speed Klamps™ or ½" knockouts
- Simplex, duplex, and decorative style devices are available (specific devices may vary between models)
- Steel wing brackets for secure installation
- Basic rectangular exterior profile in all single gang boxes for quick and easy cut-in installation



Single Gang Product Line



FB-1N



FB-2DB



FB-6

Cu. In Volume	Catalog Number	Cover Finish	Cover Type	Device	LV Provision	UPC# 85339	Std. Pkg. Qty.	Std. Wt. (lb.)
24.5	FB-1	Brass	Screw Plug	Simplex	No	94123	6	8
24.5	FB-1N	Nickel-Plated	Screw Plug	Simplex	No	94128	6	8
24.5	FB-2	Brass	Screw Plug	Duplex	No	94124	6	8
24.5	FB-2DB	Dark Bronze	Screw Plug	Duplex	No	99601	6	8
24.5	FB-2N	Nickel-Plated	Screw Plug	Duplex	No	94129	6	8
24.5	FB-6	Brass	Flip Lid	Decorative	No	97233	6	8
24.5	FB-6DB	Dark Bronze	Flip Lid	Decorative	No	97235	6	8
24.5	FB-6N	Nickel-Plated	Flip Lid	Decorative	No	97234	6	8

Specifications & Replacement Parts

Specifications



FB-1

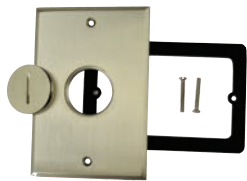
FB-2

FB-6

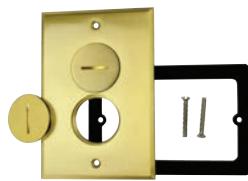
- Cut-in hole size: 2.625" x 4.437"
- Box size (no flange): 3.5" (D) x 2.498" (W) x 4.312" (H)
- Flange outside dimension: 3.250" x 4.883"
- Cover dimension (FB-1/FB-2): 0.217" (D) x 3.5" (W) x 5.125" (H)
- Cover dimension (FB-6): 0.222" (D) x 4" (W) x 5.625" (H)
- Box wire capacity: 24.5 cu. in.
- (2) ½" knockouts on bottom and (2) ½" knockouts on the side wall
- (2) molded-in Speed Klamps™ for securing NM cable
- Part material types:
 - Cover: brushed brass, nickel-plated brass or dark bronze
 - Screw plug: matches cover with nitrile O-ring
 - Gasket: closed-cell rubber
 - Box screws and wings: galvanized steel
 - Dust plate: galvanized steel
 - Device: UL listed residential grade w/ copper terminals & brass ground
- Receptacle rating: 15 amp, 125V tamper resistant with ground (Article 406 of the NEC; requirements for Tamper Resistant receptacles in dwellings)
- Assembly meets UL 514C scrub-water exclusion test requirement

*All dimensions are in inches.

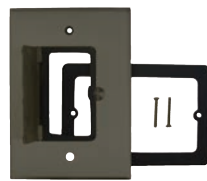
Replacement Part Kits



FB-1NCVR



FB-2CVR



FB-6DBCVR



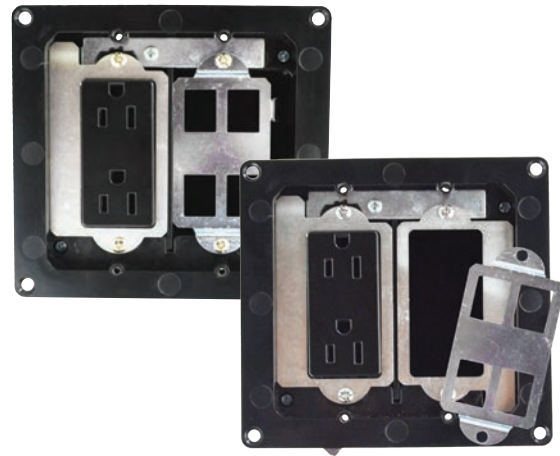
FB-BRPLG

Catalog Number	Used With	Cover Finish	Cover Type	Device	LV Provision	UPC# 85339	Std. Pkg. Qty.	Std. Wt. (lb.)
FB-1CVR	FB-1	Brass	Screw Plug	Simplex	No	94123	1	1
FB-1NCVR	FB-1N	Nickel-Plated	Screw Plug	Simplex	No	94128	1	1
FB-2CVR	FB-2	Brass	Screw Plug	Duplex	No	94124	1	1
FB-2DBCVR	FB-2DB	Dark Bronze	Screw Plug	Duplex	No	99601	1	1
FB-2NCVR	FB-2N	Nickel-Plated	Screw Plug	Duplex	No	94129	1	1
FB-6CVR	FB-6	Brass	Flip Lid	Decorative	No	97242	1	1
FB-6DBCVR	FB-6DB	Dark Bronze	Flip Lid	Decorative	No	97244	1	1
FB-6NCVR	FB-6N	Nickel-Plated	Flip Lid	Decorative	No	97243	1	1
FB-BRPLG	FB-1,FB-2	Brass	Screw Plug	Simplex, Duplex	No	94137	1	1
FB-DBPLG	FB-2DB	Dark Bronze	Screw Plug	Simplex	No	99605	1	1
FB-NPLG	FB-1N, FB-2N	Nickel-Plated	Screw Plug	Simplex, Duplex	No	94138	1	1

Two Gang Floor Box Assemblies

Features & Benefits

- Optional cover material types: brushed brass, dark bronze, or nickel-plated brass
- Includes additional dust plate for easy customization
- Low voltage (LV) openings available for industry standard keystone plugs to be installed
- Flip lids seal water tight and allow assembly to meet UL 514C scrub-water exclusion test
- TR Tamper Resistant receptacle; 15 amp 125 volt with ground (NEMA config. 5-15R). *Note: Can easily be adapted to commercial applications with the use of industry standard receptacles*
- Extra deep wiring capacity at 44.5 cubic inches
- UL listed in accordance with the requirements for floor boxes in Article 314.27 of the NEC
- Provisions for cable entry through molded-in Speed Klamps™ or 1/2" knockouts
- Steel wing brackets for secure installation
- Basic square exterior profile for quick and easy cut-in installation



FB-5 models include additional dust plate for customization of floor box assembly. The plates are easily interchangeable with no additional accessories required for installation!

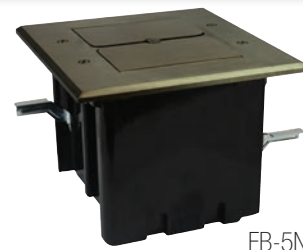
Two Gang Product Line



FB-5



FB-5DB



FB-5N

Cu. In Volume	Catalog Number	Cover Finish	Cover Type	Device	LV Provision	UPC# 85339	Std. Pkg. Qty.	Std. Wt. (lb.)
44.5	FB-5	Brass	Flip Lid	Decorative/LV	Yes	99075	6	14
44.5	FB-5DB	Dark Bronze	Flip Lid	Decorative/LV	Yes	99076	6	14
44.5	FB-5N	Nickel-Plated	Flip Lid	Decorative/LV	Yes	99077	6	14

Specifications & Replacement Parts

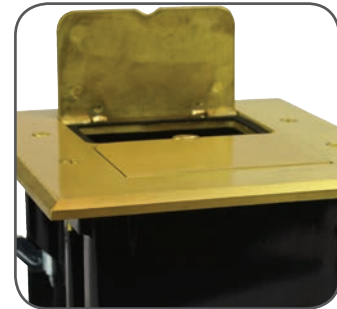
Specifications



FB-5

- Cut-in hole size: 4.625" x 4.437"
- Box size (no flange): 4.056" (D) x 4.498" (W) x 4.335" (H)
- Flange outside dimension: 5.508" x 5.133"
- Cover dimension: .222" (D) x 6.000" (W) x 5.625" (H)
- (4) Dust plate keystone openings(FB-5): .575" x .765"
- Box wire capacity: 44.5 cu. in.
- (2) ½" knockouts on bottom
- (4) molded-in Speed Klamps™ for securing NM cable
- Part material types:
 - Cover: brushed brass, nickel-plated brass or dark bronze
 - Flip Lids: matches cover
 - Gaskets: closed-cell rubber
 - Box screws and wings: galvanized steel
 - Dust plates: galvanized steel
 - Device: UL listed residential grade w/ copper terminals & brass ground
- Receptacle rating: 15 amp, 125V tamper resistant with ground (Article 406 of the NEC; requirements for Tamper Resistant receptacles in dwellings)
- Assembly meets UL 514C scrub-water exclusion test requirement

*All dimensions are in inches.



Replacement Part Kits



FB-5CVR



FB-5DBCVR



FB-5NCVR

Catalog Number	Used With	Cover Finish	Cover Type	Device	LV Provision	UPC# 85339	Std. Pkg. Qty.	Std. Wt. (lb.)
FB-5CVR	FB-5	Brass	Flip Lid	Decorative	Yes	99081	1	1
FB-5-DBCVR	FB-5DB	Dark Bronze	Flip Lid	Decorative	Yes	99082	1	1
FB-5NCVR	FB-5N	Nickel-Plated	Flip Lid	Decorative	Yes	99083	1	1

Round Floor Box Assemblies

Features & Benefits

- Optional cover material types: brushed brass, dark bronze, or nickel-plated brass
- Cover plug screws and flip lids seal water tight and allow assembly to meet UL 514C scrub-water exclusion test
- TR Tamper Resistant receptacle; 15 amp 125 volt with ground (NEMA config. 5-15R). *Note: Can easily be adapted to commercial applications with the use of industry standard receptacles*
- Low voltage (LV) openings available for industry standard keystone plugins to be installed
- Extra deep wiring capacity at 19.5 and 24.5 cubic inches
- UL listed in accordance with the requirements for floor boxes in Article 314.27 of the NEC
- Provisions for cable entry through molded-in Speed Klamps™ or ½" knockouts
- Steel wing brackets for secure installation
- Basic round exterior profile for quick and easy cut-in installation



Round Box Product Line



FB-3DB



FB-4



FB-7N

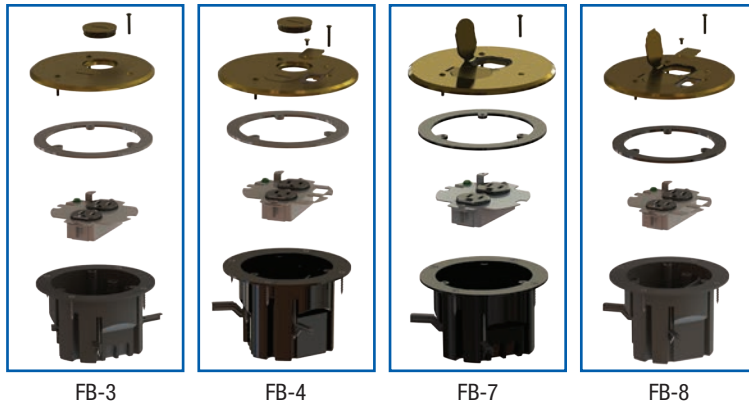


FB-8DB

Cu. In Volume	Catalog Number	Cover Finish	Cover Type	Device	LV Provision	UPC# 85339	Std. Pkg. Qty.	Std. Wt. (lb.)
24.5	FB-3	Brass	Screw Plug	Duplex	No	94125	6	10
24.5	FB-3DB	Dark Bronze	Screw Plug	Duplex	No	99603	6	10
24.5	FB-3N	Nickel-Plated	Screw Plug	Duplex	No	94130	6	10
19.5	FB-4	Brass	Screw Plug	Duplex/LV	Yes	99072	6	12
19.5	FB-4DB	Dark Bronze	Screw Plug	Duplex/LV	Yes	99073	6	12
19.5	FB-4N	Nickel-Plated	Screw Plug	Duplex/LV	Yes	99074	6	12
24.5	FB-7	Brass	Flip Lid	Duplex	No	97236	6	12
24.5	FB-7DB	Dark Bronze	Flip Lid	Duplex	No	97238	6	12
24.5	FB-7N	Nickel-Plated	Flip Lid	Duplex	No	97237	6	12
19.5	FB-8	Brass	Flip Lid	Duplex/LV	Yes	97239	6	12
19.5	FB-8DB	Dark Bronze	Flip Lid	Duplex/LV	Yes	97241	6	12
19.5	FB-8N	Nickel-Plated	Flip Lid	Duplex/LV	Yes	97240	6	12

Specifications & Replacement Parts

Specifications



- Cut-in hole size: 4.0" Dia. (standard hole saw size)
- FB-3/FB-7 box size (no flange): 3.0" (Deep) x 3.936" dia.
- FB-4/FB-8 box size (no flange): 3.433" (Deep) x 3.936" dia.
- Flange outside dimension: FB-3/FB-7 (5.0" dia.), FB-4/FB-8 (5.25" dia.)
- Cover dimension (FB-3/): 5.25" dia. x 0.217" thickness
- Cover dimension (FB-4/FB-7/FB-8): 5.75" dia. x 0.237" thickness
- (2) Dust plate keystone openings (FB-4/FB-8): 0.575" x 0.765"
- Box wire capacity: FB-3/FB-7 (24.5 cu. in.), FB-4/FB-8 (19.5 cu. in.)
- FB-3/FB-7: (2) ½" knockouts on bottom
- FB-4/FB-8: (1) ½" knockout on bottom
- (4) molded-in Speed Klamps™ for securing NM cable
- Part material types:
 - Cover: brushed brass, nickel-plated brass or dark bronze
 - Screw plugs: matches cover with nitrile O-ring
 - Low Voltage Plates: (FB-4/FB-8) with closed-cell gaskets
 - Gasket: closed-cell rubber
 - Box screws and wings: galvanized steel
 - Dust plate: galvanized steel
 - Device: nonmetallic with copper terminals and brass ground
- Receptacle rating: 15 amp, 125V tamper resistant with ground (Article 406 of the NEC; requirements for Tamper Resistant receptacles in dwellings)
- Assembly meets UL 514C scrub-water exclusion test requirement

*All dimensions are in inches.

Replacement Part Kits



FB-3NCVR



FB-4DBCVR



FB-7CVR



FB-8NCVR



FB-BRPLGLV

Catalog Number	Used With	Cover Finish	Cover Type	Device	LV Provision	UPC# 85339	Std. Pkg. Qty.	Std. Wt. (lb.)
FB-3CVR	FB-3, FB-7	Brass	Screw Plug	Duplex	No	94135	1	1
FB-3DBCVR	FB-3DB, FB-7DB	Dark Bronze	Screw Plug	Duplex	No	99604	1	1
FB-3NCVR	FB-3N, FB-7N	Nickel-Plated	Screw Plug	Duplex	No	94136	1	1
FB-4CVR	FB-4, FB-8	Brass	Screw Plug	Duplex/LV	Yes	99078	1	1
FB-4DBCVR	FB-4DB, FB-8DB	Dark Bronze	Screw Plug	Duplex/LV	Yes	99079	1	1
FB-4NCVR	FB-4N, FB-4N	Nickel-Plated	Screw Plug	Duplex/LV	Yes	99080	1	1
FB-7CVR	FB-7, FB-3	Brass	Flip Lid	Duplex	No	97245	1	1
FB-7DBCVR	FB-7DB, FB-3DB	Dark Bronze	Flip Lid	Duplex	No	97247	1	1
FB-7NCVR	FB-7N, FB-3N	Nickel-Plated	Flip Lid	Duplex	No	97246	1	1
FB-8CVR	FB-8, FB-4	Brass	Flip Lid	Duplex/LV	Yes	97248	1	1
FB-8DBCVR	FB-8DB, FB-4DB	Dark Bronze	Flip Lid	Duplex/LV	Yes	97250	1	1
FB-8NCVR	FB-8N, FB-4N	Nickel-Plated	Flip Lid	Duplex/LV	Yes	97249	1	1
FB-BRPLG	FB-3, FB-4	Brass	Screw Plug	Duplex/LV	FB-4	94137	1	1
FB-DBPLG	FB-3DB, FB-4DB	Dark Bronze	Screw Plug	Duplex/LV	FB-4DB	99605	1	1
FB-NPLG	FB-3N, FB-4N	Nickel-Plated	Screw Plug	Duplex/LV	FB-4N	94138	1	1
FB-BRPLGLV	FB-4, FB-8	Brass	Flip Lid	Duplex/LV	Yes	99084	1	1
FB-DBPLGLV	FB-4DB, FB-8DB	Dark Bronze	Flip Lid	Duplex/LV	Yes	99085	1	1
FB-NPLGLV	FB-4N, FB-8N	Nickel-Plated	Flip Lid	Duplex/LV	Yes	99086	1	1

Concrete Adapter Kit

Adapter Kits for Industry Standard Concrete Junction Boxes

For use in adapting all residential round floor box assemblies to standard industry concrete junction boxes

Features & Benefits

- Installed floor box assembly meets UL 514C scrub water exclusion test
- Quick and easy installation with fewer floor box and device components
- Floor box comes with a standard TR tamper resistant receptacle; 15 amp, 125 volt with ground (NEMA config. 5-15R)
- Allied Moulded floor box assemblies can be adapted to many standard PVC concrete junction boxes

FB-CAK Concrete Adapter Kit

Includes:

- Adapter sealing gasket
- Adapter ring
- Detailed installation instructions



Scan QR code for more information.



Allied Moulded Products, Inc.

Floor Box Assemblies:

- FB-3 (All Models)
- FB-4 (All Models)
- FB-7 (All Models)
- FB-8 (All Models)



UL[®] recognized for use with Round PVC Concrete Junction Boxes with an inside diameter of 4-1/2" to 4-9/16".

These include, but are not limited to the following:

- Arlington FLBC4500
- Cantex, 5133758/5133760
- Carlon, E971FB
- Ipex/Sceptor, FB 076954
- Kraloy, FB 078876
- Lew, FB/FBLEW

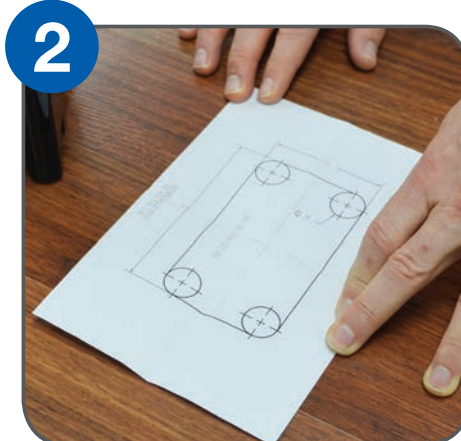


Catalog Number	Component Description	UPC#	Std. Pkg. Qty.	Std. Wt. (lb.)
FB-CAK	Concrete Adapter Kit contains adapter sealing gasket, adapter ring, and detailed installation instructions	85339 99479	6	3

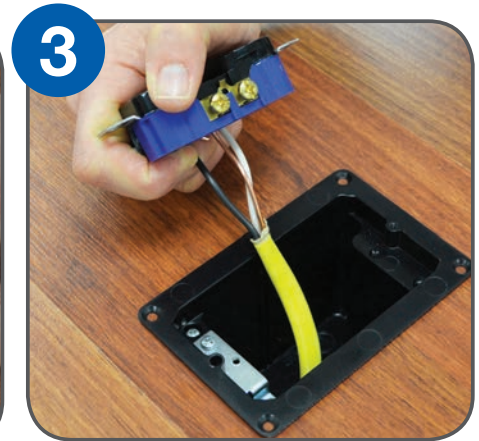
Quick & Simple Installation



1 Find a location in between floor joists and measure the box dimensions according to the template supplied in the installation instruction sheet.



2 Once measured, place the installation template on the floor and cut a hole accordingly. A small drill, jigsaw, or hole saw can be used to precisely cut the hole required.



3 Bring the electrical cable through the preferred box clamp, and place the box down in the hole and secure it with the preferred mounting method. Wire the device according to local electrical code.



4 Once the device has been wired, secure the device and dust plate down into the box using the screws supplied in the packaging.



5 Place the cover gasket on the box flange and position the cover assembly over the gasket to ensure an adequate seal between box and lid is met.



6 Secure the cover to the box with the screws supplied in the packaging. Attach all screw plugs and keystone plugs as required.

The Contractor's Choice

Allied Moulded Products, Inc. (Allied Moulded) is the Contractor's Choice for nonmetallic electrical boxes in today's residential markets. Leveraging more than half-a-century of experience, Allied Moulded has grown to become the benchmark of quality within the electrical industry. Our full-service molding operation includes expertise in compression and injection molding, using thermoset and thermoplastic materials, and provides our customers with a superior product at a competitive price. Our unrelenting focus on service, delivery, value, innovation and technology in everything we make and do, has made us who we are today.

Allied Moulded offers a full range of electrical outlet box products and specialty products for residential construction. All products are designed with both the electrical professional and the do-it-yourself home owner in mind and have earned a reputation for strength and rigidity while remaining innovative.



www.alliedmoulded.com



**ALLIED
MOULDED
PRODUCTS, Inc.**

222 North Union Street
Bryan, OH 43506

Phone: 800.722.2679
Fax: 800.237.7269

www.alliedmoulded.com



Available Through: